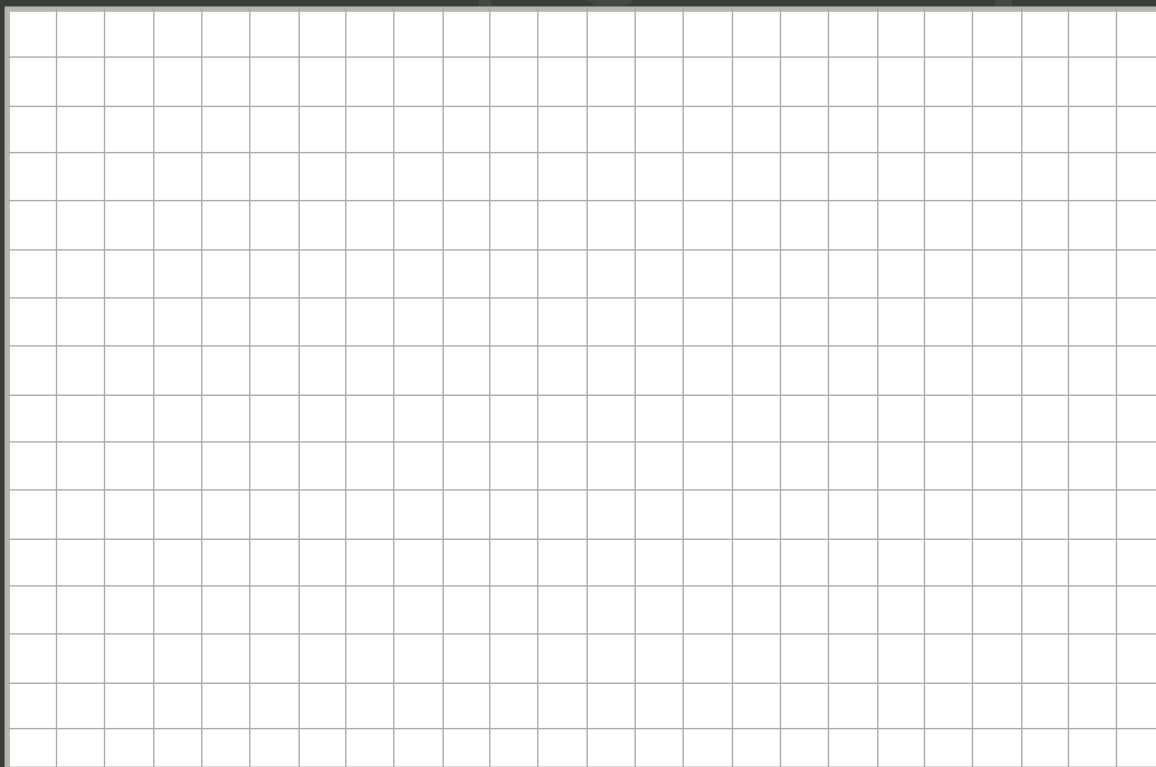
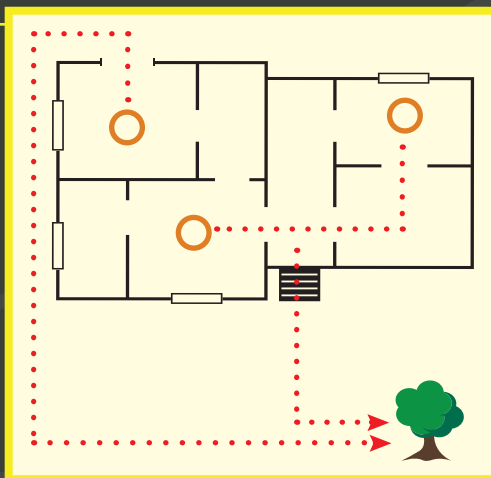


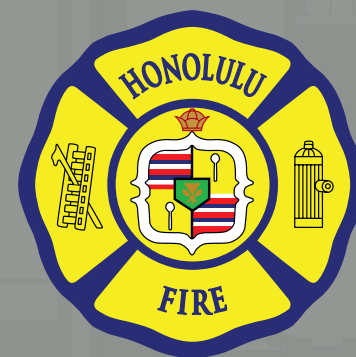
## ESCAPE PLAN

- Use the grid below to draw a map of your home showing all doors and windows.
- Show your escape routes (two ways out of every room) with arrows to your safe meeting place, which should be a safe distance from your home.
- Discuss your plan with everyone in your home, including visitors.
- Conduct a fire drill at least twice a year to practice your escape. Have one drill at night so you know how to escape safely in the dark.



# HOME

## FIRE SAFETY GUIDE



**HONOLULU**  
**FIRE DEPARTMENT**

*Pride, Service, Dedication*

THE HONOLULU FIRE  
DEPARTMENT IS PLEASED  
TO PROVIDE YOU WITH  
THIS HOME FIRE SAFETY  
GUIDE TO HELP REDUCE  
THE RISK OF FIRE OR  
INJURY IN YOUR HOME.

For more fire and life safety resources,  
visit **[firesafehonolulu.com](https://firesafehonolulu.com)**.

Your home is where fires are most likely to happen. In a typical home fire, you may have as little as one to two minutes to safely escape from the time the smoke alarm sounds. Planning and practice can help make the most of the time you have to escape. Know two ways out of every room. Ensure doors and windows leading outside open easily and are free of clutter. Go to your outside meeting place, which should be a safe distance from the home.

**USING THIS SAFETY GUIDE,  
TAKE A LOOK AROUND YOUR  
HOME FOR PLACES A FIRE COULD  
START. IDENTIFY FIRE HAZARDS  
AND ADDRESS THEM IMMEDIATELY.  
IF NECESSARY, HAVE LICENSED  
PROFESSIONALS CORRECT  
HAZARDS.**

Keep this publication handy and review it frequently with your family and friends.

## KEEP DOORWAYS AND WINDOWS CLEAR OF OBSTRUCTIONS

**All doors and windows should open easily and allow you to escape quickly and safely.**

Keep walkways and common areas clear of slip/trip hazards, such as:

- Footwear, toys, etc.
- Large items.
- Water.
- Wiring.

## HOARDING, STACKING HAZARDS

- Keeping large amounts of items in the home is a fire hazard.
- Items stored too close to heat sources may catch and/or fuel a fire.
- Hoarding prevents escape, creating a high-risk of injury or death.
- Rodents may thrive in this environment and may chew wires causing a spark.

## HELP FIRST RESPONDERS HELP YOU

**First responders cannot move swiftly through a home filled with clutter.**

- It impedes the search and rescue of people and pets.
- It delays medical service.
- It increases the risk of being trapped.



## SMOKING

- **If you smoke, smoke outside.** Never smoke in bed.
- **Never smoke where medical oxygen is used.** Oxygen can make an existing fire burn faster and hotter.
- **Place deep, sturdy ashtrays or a metal can wherever you smoke.** The ashtrays or metal cans should be placed away from anything that can burn.
- **Before you throw out cigarette butts and ashes, ensure they are extinguished.** Never empty smoking material directly into a trash can. Place it in water or sand prior to disposal.
- **Keep cigarettes, lighters, matches, and other smoking materials out of the reach of children in a locked cabinet.**

Fires have occurred while vaping products, including electronic cigarettes, were in use, being charged, or during transportation.

**WARNING:** Never leave charging e-cigarettes unattended.

Vapors from flammable and combustible liquids can ignite, causing a fire. Many common household products require additional attention when it comes to use, clean up, and storage.

Flammable liquids include gasoline, lacquers, and nail polish.

Combustible liquids include paint thinner, kerosene, and oil-based paints and stains.

## USE

- Flammable and combustible liquids should not be used near an open flame. Do not smoke when working with these liquids.
- If you spill flammable and combustible liquids on your clothing, remove your clothing and place it outside to dry. The clothing can be laundered once it is dry.
- Only use gasoline as motor fuel.
- Do not
  - Use as a cleaner.
  - Use to break down grease.
  - Bring gasoline indoors, even in small amounts.



## CLEAN UP

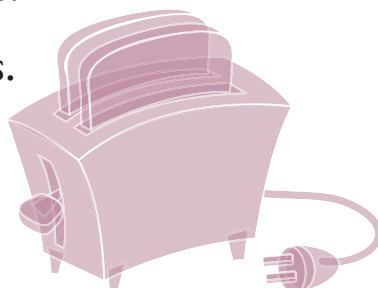
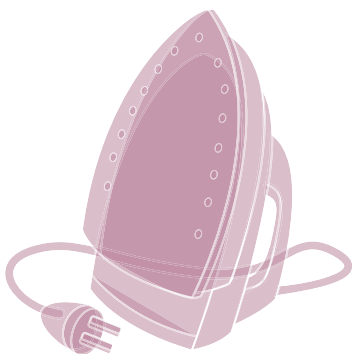
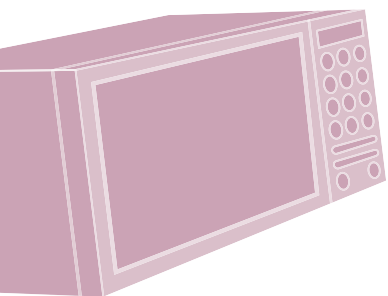
- Never leave cleaning rags in a pile.
- Hang the rags outside or spread them on the ground. Weigh them down so they do not blow away. Keep them away from buildings.
- Place dried rags in a metal container and fill the container with a water and detergent solution. Ensure the cover is on tightly and shake.
- Keep containers of soiled rags in a cool place and keep them out of direct sunlight and other heat sources. Visit [opala.org](http://opala.org) for information on disposing of them.

## STORAGE

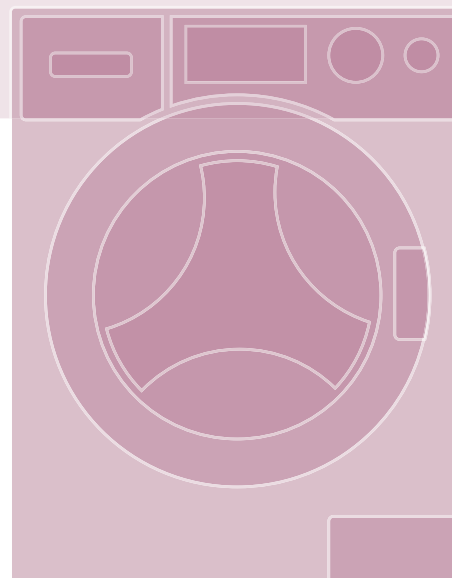
- Keep liquids in their original containers tightly capped or sealed. Never store the liquids in glass containers.
- Only store gasoline in a container that is sold for that purpose.
  - Ensure the container is tightly capped when not in use.
  - Never store gasoline in a basement or in the occupied space of a building.
- Keep the containers in an outbuilding, a detached garage, or a shed.

**PLUG TEMPERATURE-REGULATING PRODUCTS  
DIRECTLY INTO WALL OUTLETS, THIS INCLUDES:**

- Clothes dryers.
- Clothes irons.
- Coffee makers.
- Curling irons.
- Microwave ovens.
- Pressure cookers.
- Refrigerators.
- Rice cookers.
- Stoves.
- Toasters.
- Toaster ovens.
- Washers.



- Always remove lint from the trap before use.
- Regularly check the dryer exhaust vent hose(s) behind the dryer. Bends and lint buildup can block airflow.
- Promptly vacuum debris, especially fluffy debris, as this material is highly flammable and a small spark can set it on fire.
- Never place rubber, plastic, foam, or any other material that made contact with flammable liquids in the dryer, even if it has been washed.
- Never leave a dryer running while sleeping or if you are away from home.

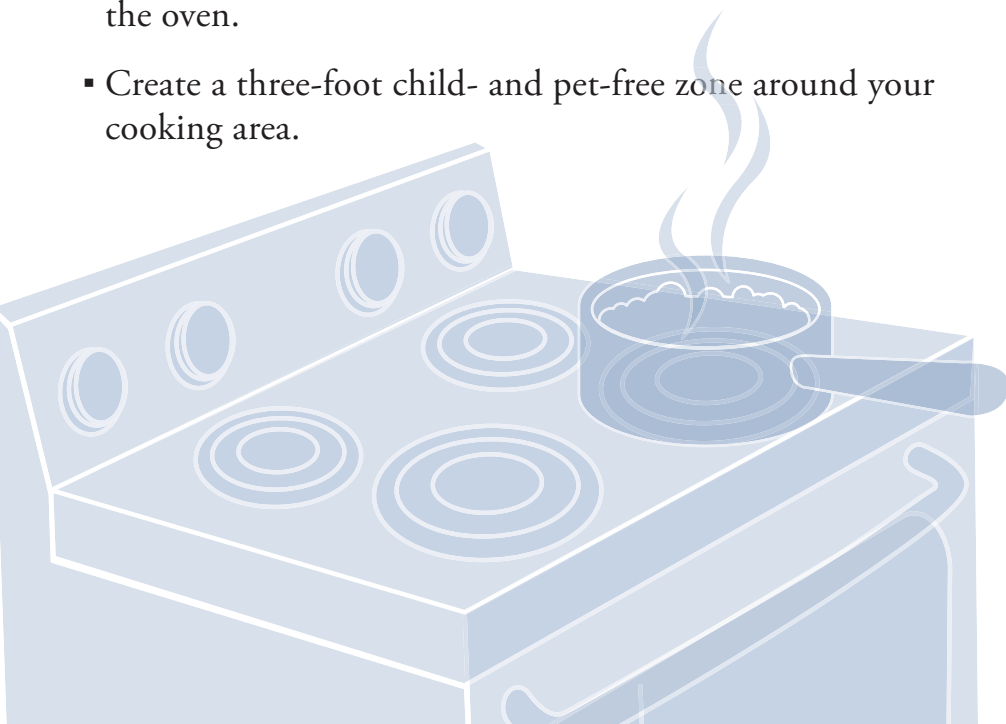


**IF YOU ARE UNSURE ABOUT A PARTICULAR  
APPLIANCE OR ITEM THAT MAY BE ON A RECALL LIST,  
CONTACT THE CONSUMER HOTLINE AT  
800-638-2772 OR VISIT [WWW.CPSC.GOV](http://WWW.CPSC.GOV).**



**COOKING IS THE LEADING CAUSE OF HOME FIRES. PROTECT YOURSELF, YOUR FAMILY, AND YOUR NEIGHBORHOOD BY PRACTICING THESE PREVENTION TIPS:**

- Stay in the kitchen while you are cooking. If you leave the kitchen, turn off the stove.
- Keep items, such as oven mitts, wooden utensils, towels, etc., away from the stovetop, even when the stove is off.
- Keep a lid nearby to smother small grease fires. Smother the fire by sliding a lid over the pan and turning the stove off.
- For an oven fire, turn off the heat and keep the door closed.
- Only plug one heat-producing appliance, such as a coffee maker, toaster, etc., into an outlet at a time.
- Never store items on top of the stove or cooktop and inside the oven.
- Create a three-foot child- and pet-free zone around your cooking area.



## OUTDOOR GRILLING SAFETY

- Never leave grills unattended.
- Grills should only be used outdoors.
- Set your grill in an open area at least 10 feet away from buildings.

### FOR GAS GRILLS:

- Ensure the hose connection is tight, and check for leaks by spraying a diluted solution of soap and water on the hose and fittings. If bubbles form, turn the cylinder off, and do not use it until the leaks are fixed.
- Keep a small spray bottle of water nearby for grill flare-ups
- Turn the grill and cylinder off immediately after use, and ensure the cylinder valve knob is completely turned to the shut-off position before storing.

### FOR CHARCOAL GRILLS:

- Avoid adding lighter fluid after the coals have been lit.
- Always place coals in a metal container with a tight lid after they have cooled for 48 hours.

**BEFORE LIGHTING AN IMU OR LARGE COOKING FIRE, NOTIFY THE FIRE COMMUNICATION CENTER AT 808-723-3473.**

## HAVE ELECTRICAL WORK PERFORMED BY LICENSED PROFESSIONALS. APPLIANCES AND ELECTRICAL CORDS SHOULD BE CERTIFIED BY UNDERWRITERS LABORATORY (U.L.).

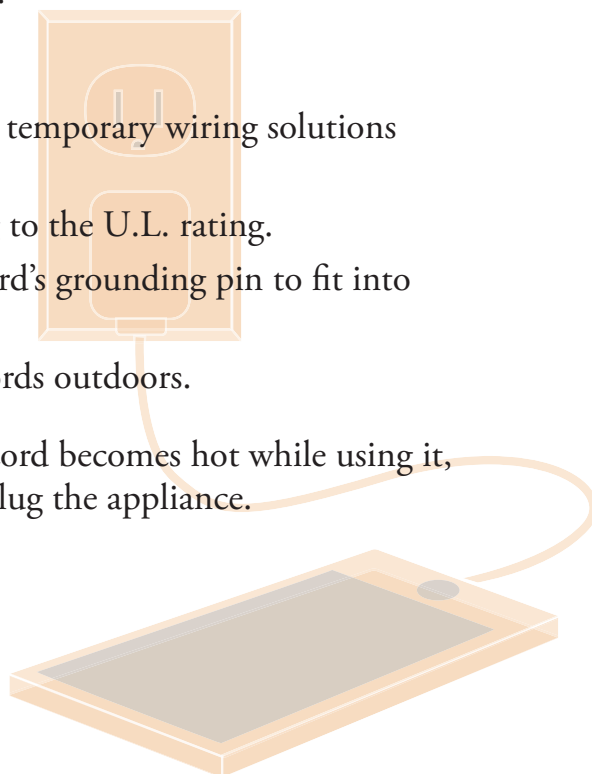
- Avoid plugging in more than one plug per outlet. Failure to do so may lead to overloading of the circuit.
- Discard any item with damaged/frayed wiring.
- The following are extremely hazardous:
  - Running wiring under carpets, rugs, or furniture
  - Pinching wires when moving furniture
  - Daisy chains; connecting multiple extension cords to extend farther
  - Piggybacking: plugging a power strip into another power strip connected to one outlet.

### EXTENSION CORD SAFETY

Extension cords are intended as temporary wiring solutions and not for permanent use.

- Use extension cords according to the U.L. rating.
- Never remove an extension cord's grounding pin to fit into a two-prong outlet.
- Never use indoor extension cords outdoors.

**WARNING:** If the extension cord becomes hot while using it, immediately unplug the appliance.



## LITHIUM-ION BATTERIES

Handle batteries carefully, and only use the battery designed for the device.

- Keep lithium-ion batteries at room temperature.
- Avoid excessive charging, direct sunlight, and a hot/humid environment.
- Store separately; away from anything that can catch fire, including other lithium-ion batteries.
- Discontinue use if the battery exhibits the following:
  - odor
  - change in color or shape
  - drop damage
  - too much heat
  - leaking
  - odd noises



### CHARGING

- Use charging cords and blocks approved by the manufacturer for the specific device model.
- Replace cords that are damaged, frayed, or sticky to the touch.
- Charge devices, especially cell phones, on a hard, nonflammable surface.
  - Never charge devices on beds, couches, or cloth.
  - Charge in a cool, ventilated area. Avoid direct sunlight and heat.
- Avoid excessive charging.
- Contact the manufacturer for more information.

### DISCARDING

- Avoid putting rechargeable batteries in the trash or in piles. Recycling is the best option.
- If you are unsure of how and where to safely discard batteries, visit [opala.org](https://www.opala.org).

FOR MORE INFORMATION, SAFETY TIPS, AND CHECKLISTS, VISIT <https://www.esfi.org/home-safety>.



## SMOKE ALARMS TO DETECT A FIRE ARE ESSENTIAL IN EVERY HOME.

Working smoke alarms save lives, allowing you more time to escape.

### SMOKE ALARMS SHOULD BE INSTALLED IN:

- All sleeping rooms.
- Outside of each separate sleeping area, in the immediate vicinity of the sleeping rooms (hallway, but not by the bathroom).
- On each level of the dwelling unit, including basements.

**AMERICAN DISABILITIES ACT-ACCESSIBLE SMOKE ALARMS AND ALERT DEVICES ARE ALSO AVAILABLE AT YOUR LOCAL HARDWARE STORE.**

### MAINTENANCE REMINDERS:

- Test smoke alarms each month to ensure it is working and familiarize household members with the sound.
- Dust or vacuum smoke alarms frequently to eliminate dust, debris, and insects that may cause false alarms.
- If your smoke alarms have a nine-volt battery, replace the battery each year.
- Replace smoke alarm units every ten years or sooner if they do not respond properly.



### CLOSE BEFORE YOU DOZE.

A closed door can slow the spread of fire, reduce toxic smoke levels, improve oxygen levels, and decrease temperatures dramatically. That could make a life-saving difference in your home.

## AUTOMATIC FIRE SPRINKLERS DETECT HEAT AND CONTROL THE FIRE.

By reducing the heat, flames, and smoke produced in a fire, fire sprinklers save lives providing residents more time to escape.

- When installing, use a licensed professional to install sprinklers.
- Inspect, test, and maintain sprinklers per the manufacturer's recommendations.
- Fire sprinklers are the first line of defense against fires!
- Having fire sprinklers are like having a fire fighter in your home 24/7.

There are many factors causing homes to burn quicker than ever before, which place the occupants and fire fighters at risk. Consider installing an automatic fire sprinkler system when building or remodeling an existing home.

## FIRE EXTINGUISHERS ARE USED TO CONTROL OR EXTINGUISH A SMALL FIRE THAT IS NOT GROWING RAPIDLY.

- A minimum 2A-10B:C portable fire extinguisher is sufficient for your home and available at the local hardware store.
- Install the fire extinguisher in a visible, unobstructed, designated location.
- Monthly inspection checklist:
  - Verify the locking pin is intact.
  - Examine the extinguisher for obvious physical damage, corrosion, leakage, or clogged nozzle.
  - Confirm the pressure gauge or indicator is in the operable range or position.
  - Ensure the operating instructions on the nameplate are legible and facing outward.
- Read and follow the manufacturer's instructions on care and maintenance.

**IF YOU HAVE DOUBTS ABOUT FIGHTING A FIRE... JUST GET OUT! NEVER RISK YOUR LIFE TO SAVE PROPERTY! REMEMBER TO CLOSE THE DOOR BEHIND YOU TO HELP CONTAIN THE FIRE. CALL 9-1-1 FROM OUTSIDE THE BUILDING.**